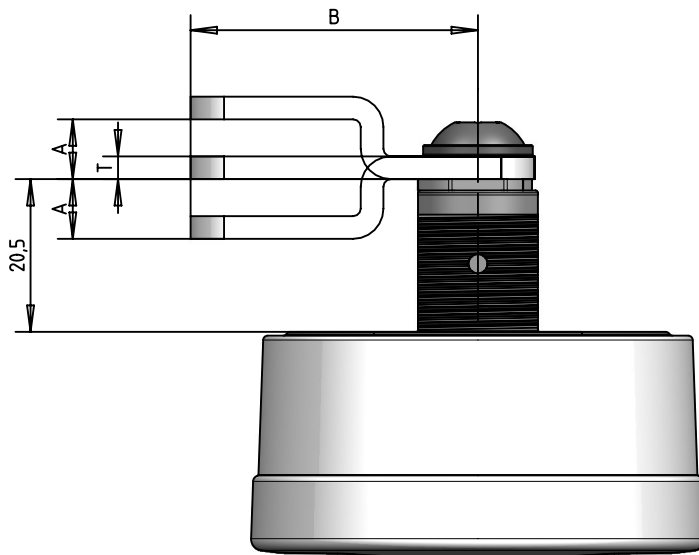
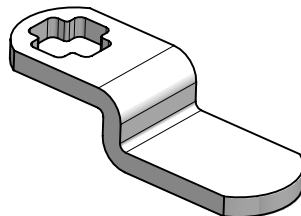


Riegelauswahl

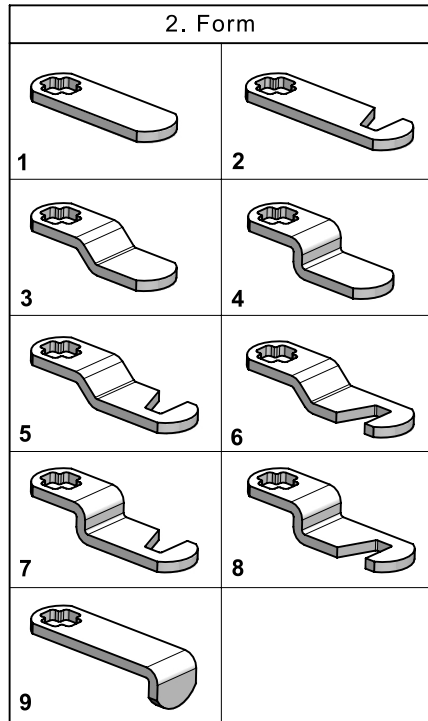
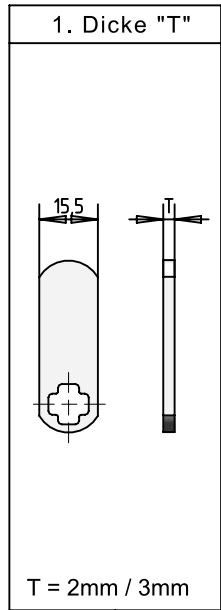
für Schloss 1401 / 1504 / 2112 / 1606 / 1904 / 1905



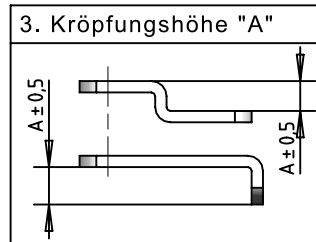
Bestellmatrix 1

Lagerprogramm (bevorzugt zu verwenden) 2

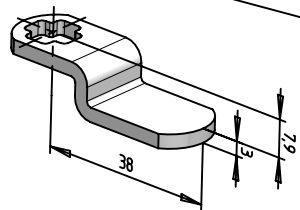
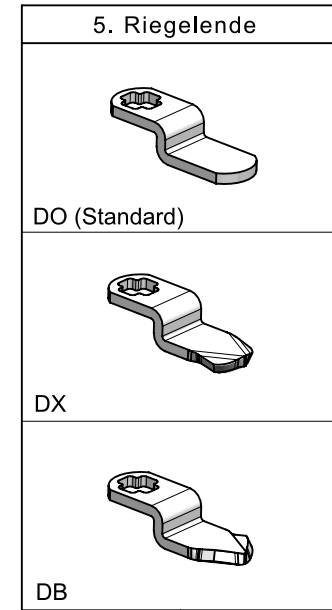
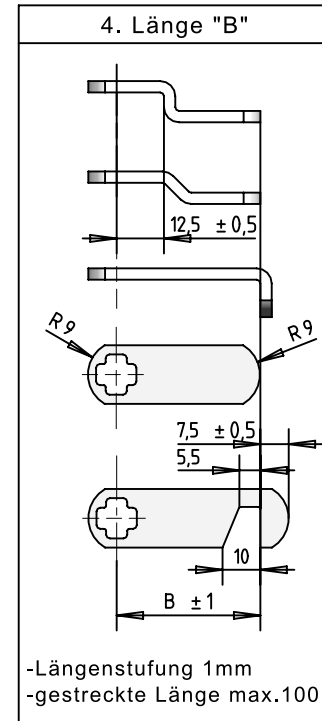
Riegel Bestellmatrix (für Schloss 1401 / 1504 / 1606 / 2112 / 1904 / 1905)



3. Kröpfungshöhe "A"

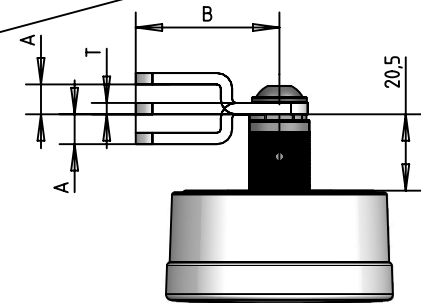


A	mm	für Form
00	0	-1-2-
03	1,2	-3-5-6-
04	1,6	-3-5-6-
05	2,0	-3-5-6-
06	2,4	-3-5-6-
07	2,8	-3-5-6-
08	3,2	-3-5-6-
10	4,0	-3-5-6-
12	4,8	-3-4-5-6-7-8-
14	5,6	-3-4-5-6-7-8-
16	6,4	-4-7-8-9-
20	7,9	-4-7-8-9-
21	8,3	-3-5-6-
25	9,9	-3-4-5-6-7-8-9-
28	11,1	-4-7-8-9-
32	12,7	-3-4-5-6-7-8-9-
34	13,5	-4-7-8-9-
38	15,0	-4-7-8-9-
40	15,9	-4-7-8-9-
44	17,5	-4-7-8-9-
48	19,1	-4-7-8-9-
50	19,9	-4-7-8-9-
64	25,4	-4-7-8-9-
72	28,6	-4-7-8-9-



Bestellbeispiel:

Riegel- 3 - 4 - 20 - 38 - DO



Riegel Lagerprogramm

(bevorzugt zu verwenden)



Sortierung: 1. Länge
2. Kröpfungshöhe

Dicke "T"	Form	Kröpfungshöhe "A"	Länge "B"	Endung	Kröpfungshöhe in mm
3	3	08	30	DO	3,2
3	4	16	34	DO	6,4
3	7	34	34	DO	13,5
3	8	34	34	DO	13,5
3	6	21	35	DO	8,3
3	5	21	35	DO	8,3
3	1	00	38	DO	0,0
3	3	10	38	DO	4,0
3	3	12	38	DO	4,8
3	4	16	38	DO	6,4
3	4	20	38	DO	7,9
3	4	25	38	DO	9,9
3	1	00	40	DO	0,0
3	3	05	40	DO	2,0
3	3	10	40	DO	4,0
3	4	14	40	DO	5,6
3	4	38	40	DO	15,0
3	3	07	42	DO	2,8
3	4	25	42	DO	9,9
3	1	00	45	DO	0,0
3	3	05	45	DO	2,0
3	3	08	45	DO	3,2
3	3	12	45	DO	4,8
3	3	25	45	DO	9,9
3	3	21	48	DO	8,3
3	4	28	48	DO	11,1
3	3	05	50	DO	2,0
3	3	08	50	DO	3,2
3	4	12	50	DO	4,8
3	3	14	50	DO	5,6
3	4	20	50	DO	7,9
3	4	25	50	DO	9,9
3	4	50	50	DX	19,9
2	1	00	53	DO	0,0
3	3	07	56	DO	2,8
3	3	04	57	DO	1,6
3	1	00	58	DB	0,0
3	4	16	62	DX	6,4